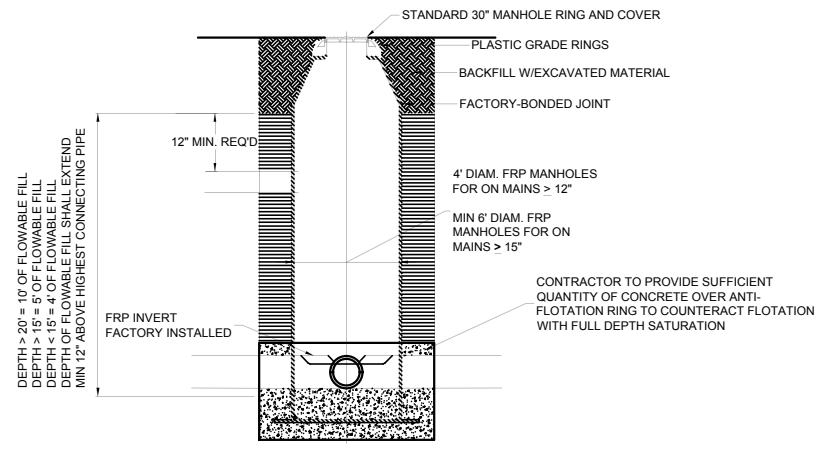
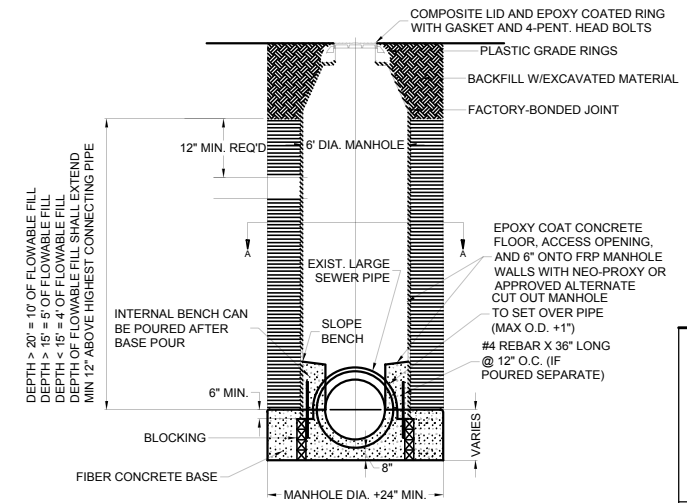


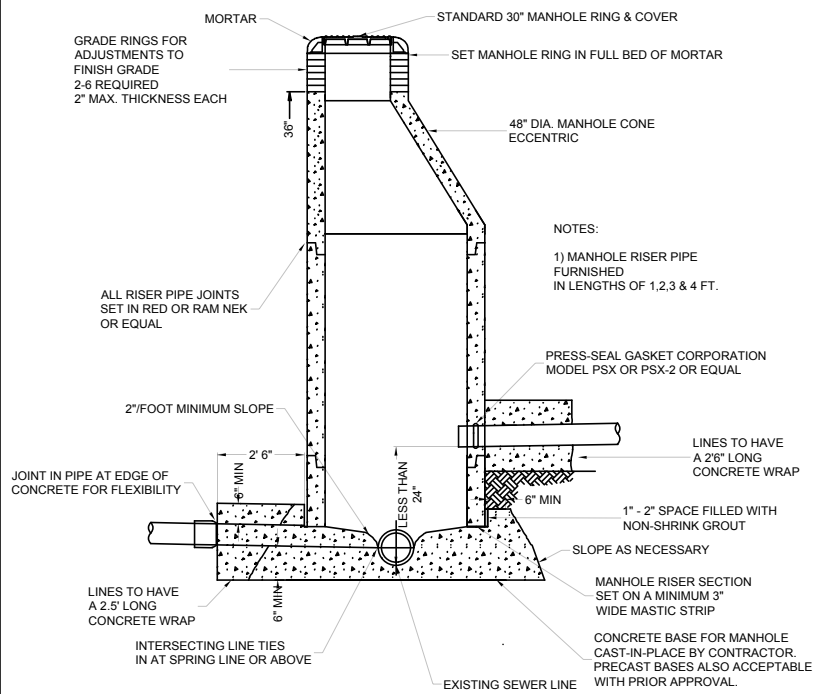
**FIBERGLASS MANHOLE DETAIL
12" AND SMALLER MAINS**



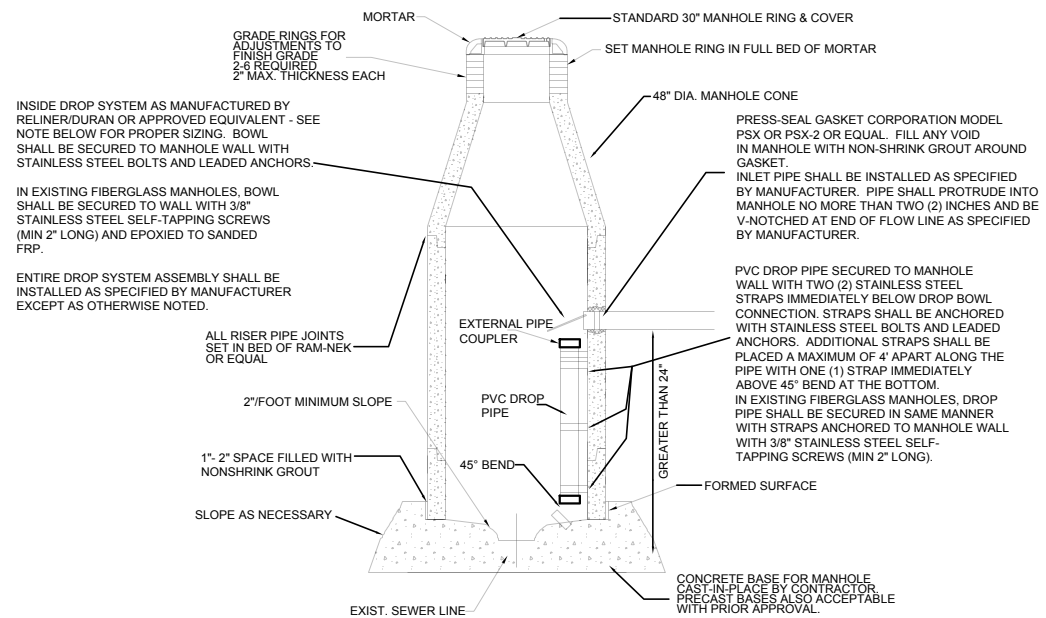
**FIBERGLASS MANHOLE DETAIL
WATERTIGHT MANHOLES**



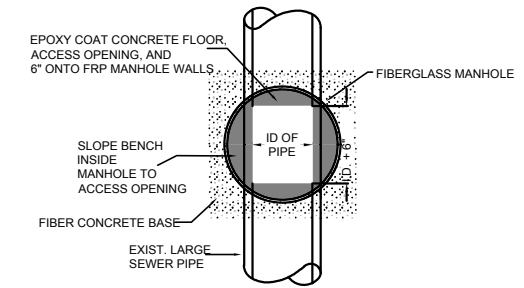
**FIBERGLASS MANHOLE DETAIL
15" AND LARGER MAINS**



INTERSECTING LINE DETAIL



DROP ASSEMBLY DETAIL



SECTION A-A



CAPITAL PROJECTS & DEVELOPMENT ENGINEERING

PROJECT DESCRIPTION:

COA STANDARDS

REVISIONS

SHEET TITLE:
STANDARD DETAIL SHEET-
WASTE WATER

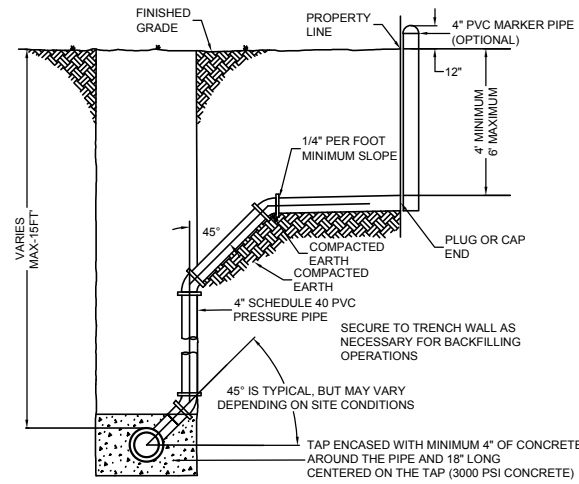
DESIGNED BY: RODNEY RICH DATE: 6/30/26

APPROVED BY: JACKSON ZAHARIA SCALE: N/A

PROJECT NO:
N/A

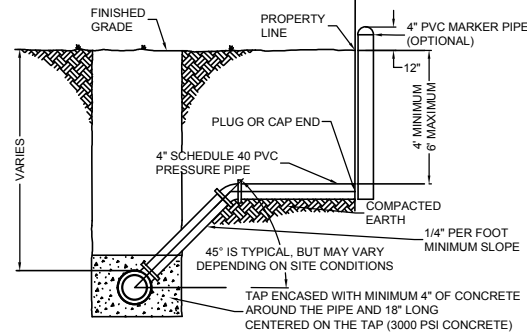
SHEET NO:
01 OF 02

W:\COA Standard Detail Sheets From Web\2026 CPD&E Standards Details - Wastewater.dwg



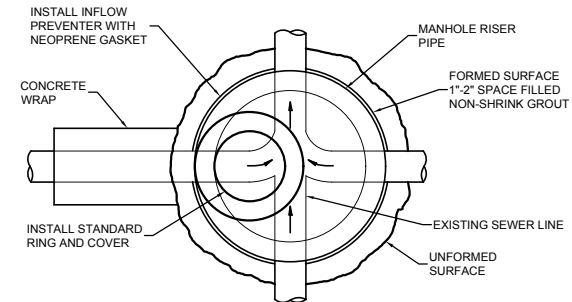
- NOTES:
- 1) TAPS 8" OR LARGER REQUIRE CONSTRUCTION OF A MANHOLE
 - 2) TAP TO BE PLACED AT THE APPROXIMATE MIDPOINT OF THE LOT BEING SERVED
 - 3) THIS DETAIL SHALL APPLY WHEN DEPTH OF SEWER MAIN EXCEEDS APPROXIMATELY 10'

DEEP SEWER TAP DETAIL

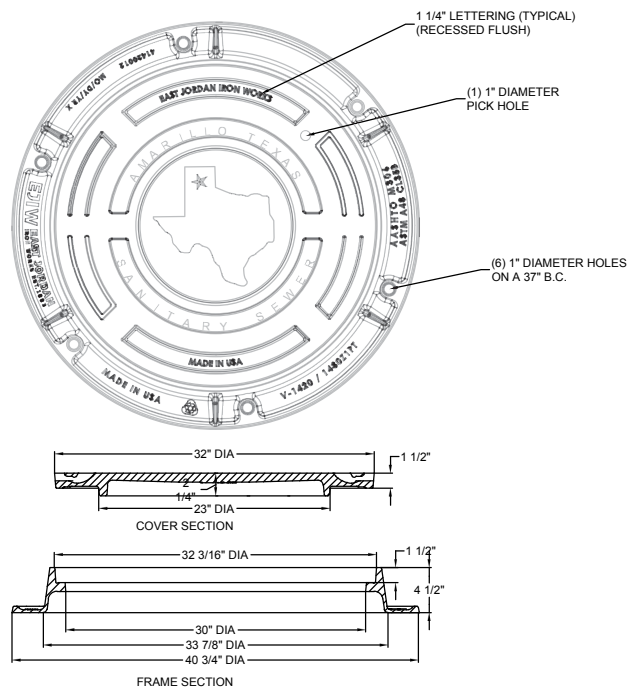


- NOTES:
- 1) TAPS 8" OR LARGER REQUIRE CONSTRUCTION OF A MANHOLE
 - 2) TAP TO BE PLACED AT THE APPROXIMATE MIDPOINT OF THE LOT BEING SERVED
 - 3) THIS DETAIL SHALL APPLY WHEN DEPTH OF SEWER MAIN EXCEEDS APPROXIMATELY 10'

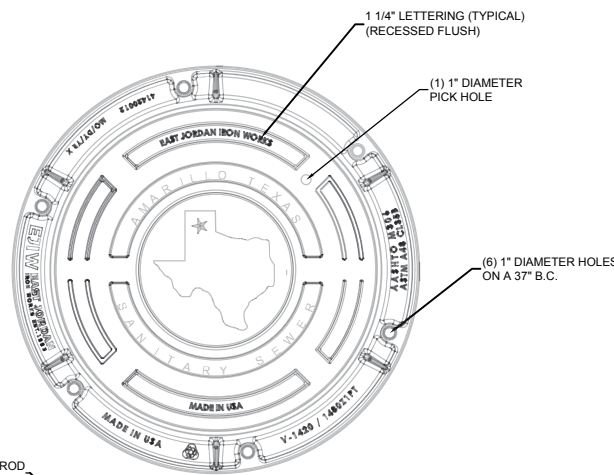
SHALLOW SEWER TAP DETAIL



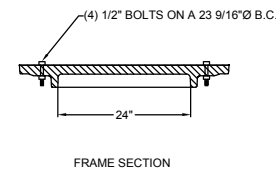
MANHOLE PLAN VIEW



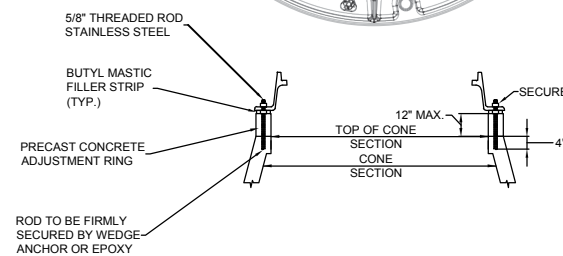
STANDARD 30" MANHOLE RING AND COVER



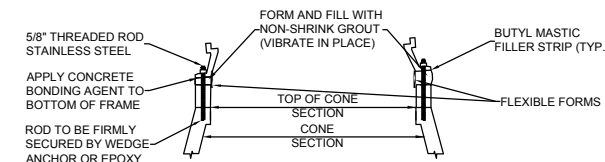
BOLT DOWN 30" MANHOLE RING AND COVER



FRAME SECTION



INSTALLATION DETAIL FOR FRAMES AND COVERS



INSTALLATION DETAIL FOR SLOPE ADJUSTMENT

- NOTE:
1. APPROVED WATER SEALANT REQUIRED AT ALL JOINTS. WATERTIGHT MANHOLE FRAME MODE #1045Z BY EAST JORDAN IRON WORKS, INC OR APPROVED EQUAL.
 2. STAINLESS STEEL REQUIRED FOR ALL HARDWARE AND FASTENERS.
 3. BOLT DOWN MANHOLE FRAME AND COVER SHALL BE IN FLOODPLAIN AREAS.



PROJECT DESCRIPTION:

COA STANDARDS

REVISIONS

SHEET TITLE:
STANDARD DETAIL SHEET-
WASTE WATER

DESIGNED BY: RODNEY RICH DATE: 6/30/26

APPROVED BY: JACKSON ZAHARIA SCALE: N/A

PROJECT NO:
N/A

SHEET NO:
02 OF 02